

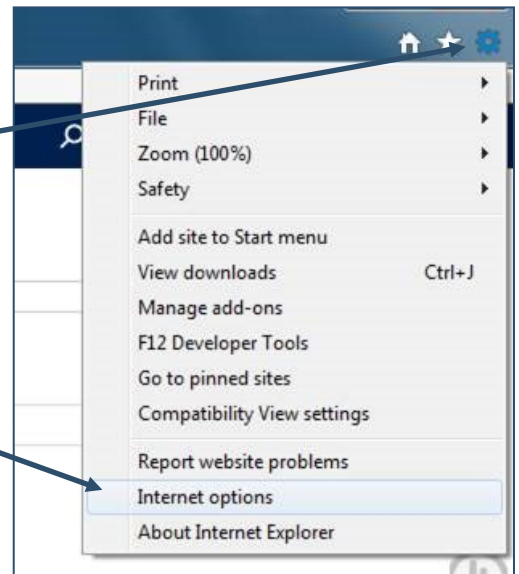
SimplyBiz Group secure sites - Internet Explorer

We have been contacted by some Members and Clients recently who are having some problems logging onto the secure area of the SimplyBiz Group websites when using Internet Explorer.

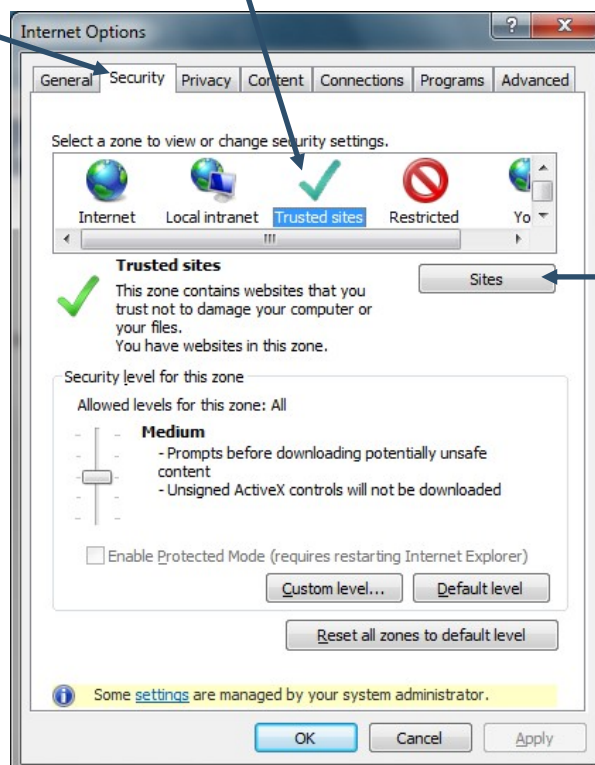
Following investigation, this appears to be due to a recent upgrade to the Internet Explorer browser combined with the default security settings of the member's computer.

To help you to access the secure areas through Internet Explorer, please follow the three steps below to add our sites to your trusted list.

1. Open your browser window
2. Click on the cogwheel in the top right hand corner of the browser window
3. Click on 'Internet options' in the drop down menu



4. Click on the 'Security' tab and then on 'Trusted Sites'. Now click on 'Sites'.



5. In the new pop-up window, add the relevant addresses of the secure sites that you access:

https://*.simplybiz.co.uk

https://*.compliancefirst.co.uk

https://*.simplybizmortgages.co.uk

https://*.sifa.co.uk

https://*.consumercreditcentre.co.uk

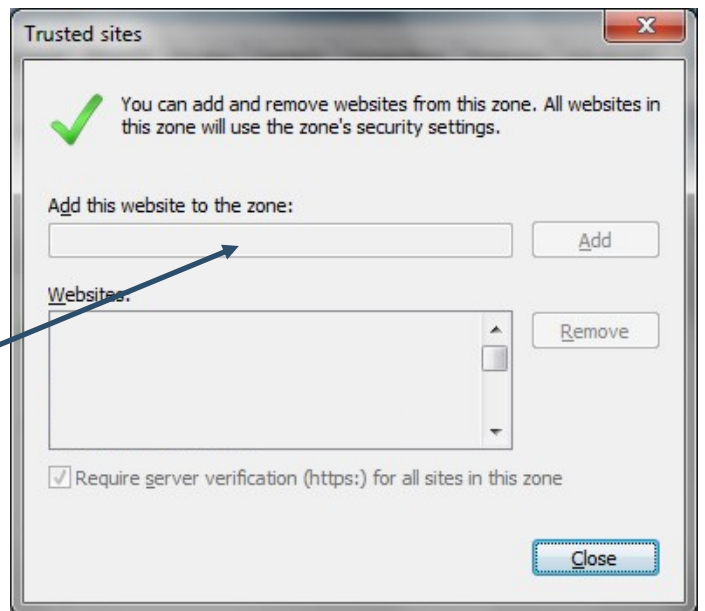
https://*.nmba.info

https://*.simplyenrol.co.uk

https://*.advisermediaplayer.co.uk

https://*.productnewshub.co.uk

Copy and paste each address into the top box and then click add and repeat as required.



Alternatively, we have had no reported issues with any other web browser, so if you have Google Chrome or Mozilla Firefox installed on your computer, you may find those easier to use for our secure sites.